



V364

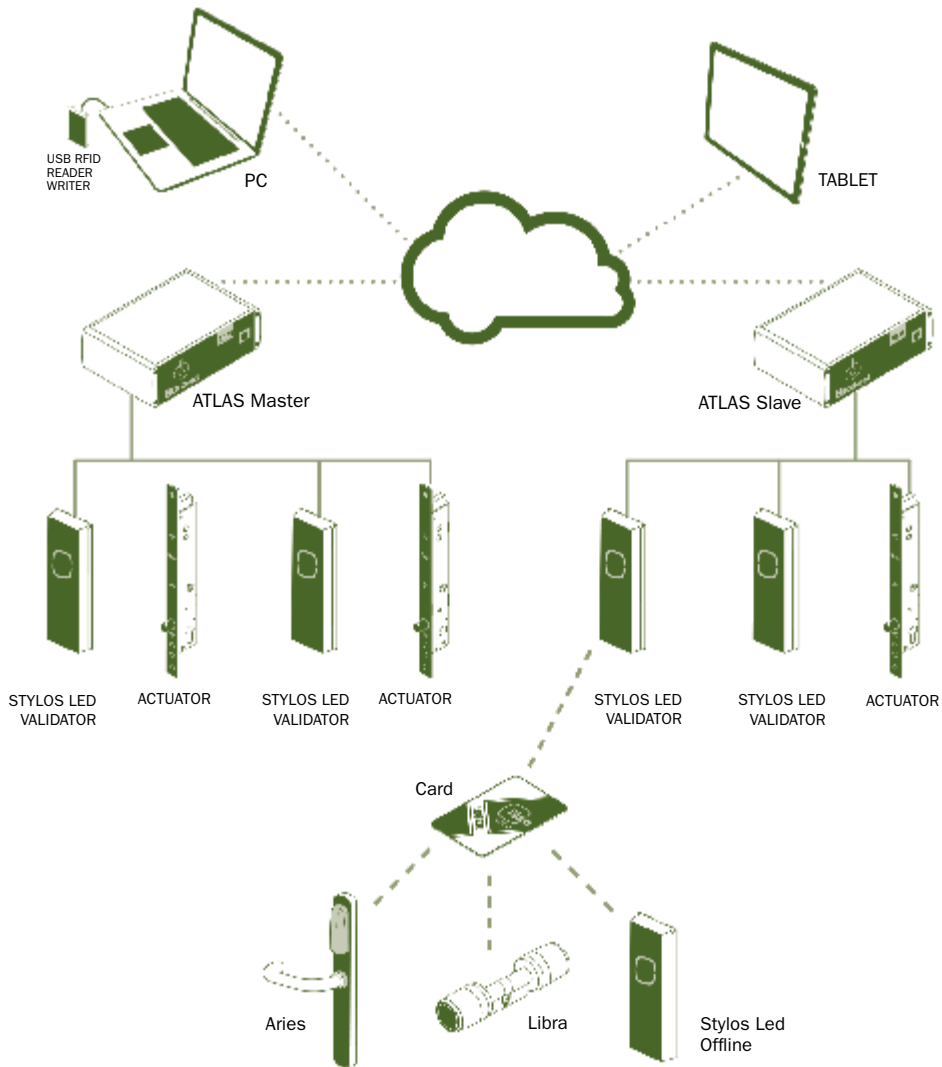
E N G L I S H

THE NEW WAY
TO MANAGE
YOUR DOOR

ISEO zero1

V364 System

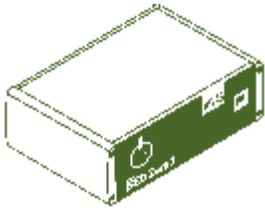
RFID CONFIGURATION AND COMPONENTS



- >> **RFID MIFARE DESFIRE AND MIFARE CLASSIC CREDENTIAL SUPPORT**
WITH CONFIGURABLE DATA LAYOUTS
- F9000 MECHATRONIC KEYS ATEX DIRECTIVE COMPLIANT**
- ONLINE AND OFFLINE LOCK SUPPORT ALLOWING:**
 - REMOTE DISABLING OF CREDENTIALS (WITH VALIDATION OR VOID LIST)
 - REMOTE COLLECTION OF AUDIT TRAILS AND BATTERY STATUS
- DEVICES SOFTWARE UPGRADE ON THE FIELD**
- INTEGRATION INTO BUILDING MANAGEMENT SYSTEMS** VIA WEB SERVICES WITH SOAP (SIMPLE OBJECT ACCESS PROTOCOL) OVER HTTP TECHNOLOGY.



V364 System

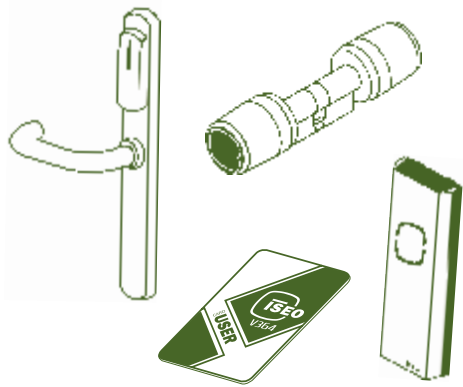


WEB BASED ACCESS CONTROL SYSTEM

The Atlas (master) controller server is the core of V364. It is an embedded web server; there is no need to install any software or buy a dedicated server computer. Everything you require is in the Atlas box, a solid state pre-configured appliance, allowing the system to be up and running in minutes. V364 is secure thanks to Linux operating system which ensures stability and greater security from external threats or virus attacks. V364 provides system administrators different login access levels.

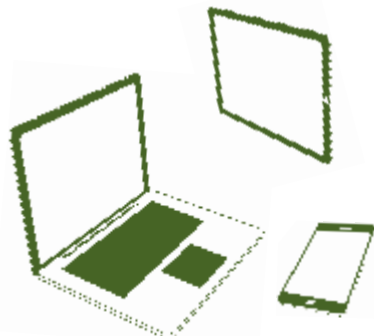
MANAGEMENT BY MOBILE V364 APP AND BROWSERS

V364 web server gives you the freedom to manage and control accesses anywhere and anytime with no need to be in a dedicated client workstation. V364 features a user-friendly interface to manage your electronic access control system allowing to set and change access rights, add users, door groups or retrieve reports from any mobile device or desktop computer with browser.



SECURING EXTERNAL AND INTERNAL DOORS

V364 secures external gates with online readers and internal doors equipped with offline, battery-powered devices and easy to install. Access rights are updated through online validators or mobile validators for the mobile workforce. The online validators automatically change the user access rights data on the electronic key while opening the main door of the facility. Audit trails will be downloaded from the offline locks and stored on the electronic key while opening the internal doors. Then the data will be uploaded to the Atlas at the moment of the electronic key validation. The Atlas web server controller combined with offline devices (such as the electronic trim set Aries, the electronic cylinder Libra and the mechatronic cylinder F9000) delivers a cost-effective access control solution ideal for small and medium sized facilities.





SUPPORTING CONTACTLESS RFID CREDENTIALS AND MECHATRONIC KEYS



EXPANDABLE AND EASY TO INTEGRATE INTO A BUILDING MANAGEMENT SYSTEM

V364 supports secure Mifare Desfire and Mifare Classic RFID technology with a customizable credential data layout that can easily fit into the available memory slot of pre-existing cards and credentials. F9000 mechatronic keys are suitable for explosion danger environments as they comply with the ATEX directive and can be used also in a Master Key system with F9 mechanical cylinders. Installing F9000 cylinders doesn't require any wiring since the energy source is in the key itself.

FEATURING TRADITIONAL AND ROLE-BASED ACCESS CONTROL

In traditional access control, the access authorizations are directly assigned to each access user. With Role-Based Access Control, permissions are based on the roles that individual users have as a part of an organization.

Roles are closely related to the concept of user groups, simplifying complex access control policies and converging physical access control with logical IT security.

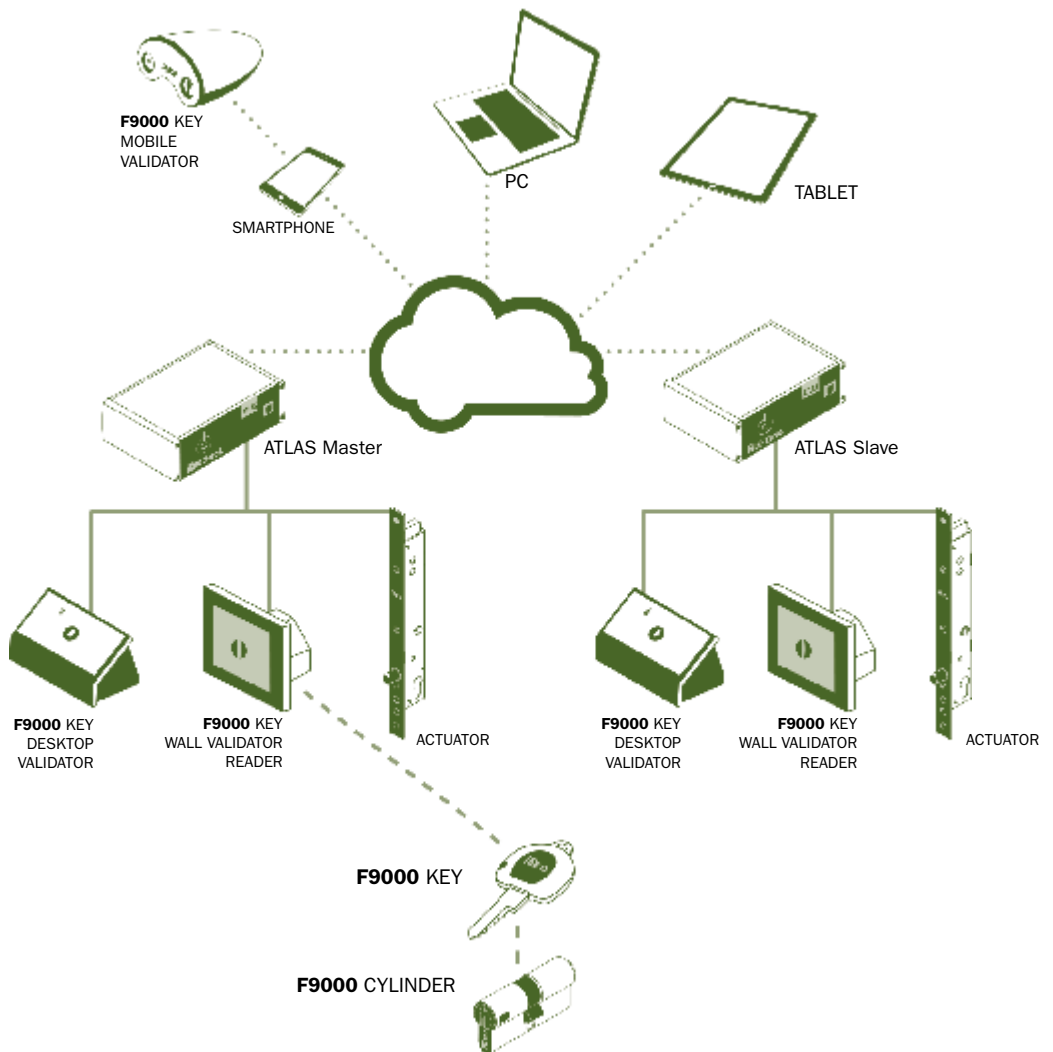
V364 is designed to easily scale with your need and your budget. As your business grows, V364 will grow with you. You can add doors, Atlas (Slave) controllers for multi-site applications and users to the system at any time. V364 connects multiple facilities on the same existing networking infrastructure and will be the core of your next level of facility integration accordingly to the system integrators of the ISEO Technology Partner program VAR (Value Added Reseller).

V364 SYSTEM FEATURES

- BUILT-IN WEB SERVER PLATFORM** INTO SOLID STATE ATLAS MASTER CONTROLLER
- MANAGED ACROSS MULTIPLE OPERATING SYSTEMS SUPPORTING "WEBKIT" POWERED BROWSERS** (GOOGLE CHROME, SAFARI, MICROSOFT EDGE) AND WITH **V364 MOBILE APPLICATION** (FOR IOS AND ANDROID)
- USER-FRIENDLY INTERFACE:**
 - MODERN LOOK AND FEEL
 - MINIMAL TRAINING REQUIRED TO OPERATE THE SYSTEM (HIGHLY USER-FRIENDLY)
 - EASY SYSTEM CONFIGURATION FOR INSTALLERS AS ATLAS IS PRECONFIGURED AND IP NETWORK READY
 - VERY SIMPLE FUNCTIONS TO SET ACCESS RIGHTS

V364 System

F9000 CONFIGURATION AND COMPONENTS



- MULTIPLE CONFIGURATIONS SUPPORTING SEVERAL MEMORY PARTITIONS:**
UP TO 4.000 DOORS AND 5.000 ACCESS USERS
- HIGHLY SCALABLE ARCHITECTURE** SUPPORTING SINGLE OR MULTI-SITE INSTALLATIONS
- MULTIPLE ADMINISTRATORS CONCURRENT LOGIN SESSIONS**
- MULTI-LANGUAGE** SUPPORT BY INDIVIDUAL SYSTEM ADMINISTRATOR LOGIN
- SYSTEM ADMINISTRATORS** SEGMENTATION ALLOWING SPECIFIC PERMISSIONS BASED ON THE OPERATOR SECURITY LEVEL OR ROLE
- ROLE-BASED ACCESS CONTROL** >>



www.iseo.com

Iseo Serrature s.p.a.
Via San Girolamo 13
25055 Pisogne (BS)
ITALY
iseo@iseo.com

ISEO Zero1

ITALY

Via Don Fasola 4
I-22069 Rovellasca (CO)
zero1-it@iseo.com
iseozero1@iseo.com

800-728722
ELECTRONIC SUPPORT SERVICE

GERMANY

ISEO Deutschland GmbH
zero1-de@iseo.com

0700-00473601
ELECTRONIC SUPPORT SERVICE

FRANCE

ISEO France s.a.s.
zero1-fr@iseo.com
+33 1 64835858

SPAIN

Cerraduras ISEO Ibérica S.L.
zero1-es@iseo.com

900-126356
ELECTRONIC SUPPORT SERVICE

ASIA

ISEO Asia Pacific SDN. BHD.
zero1-asia@iseo.com
+603 80753331

ISEO Beijing
zero1-cn@iseo.com
+8610 58698079

UNITED ARAB EMIRATES

Iseo Projects and Access Control DMCC
iseoprojects@iseo.com
+971 4 5136162

SOUTH AFRICA

ISEO South Africa (Pty) LTD
zero1-za@iseo.com

ROMANIA

Feroneria Prod S.A.
zero1-ro@iseo.com

iseozero1.com

iOS is a mobile operating system developed by Apple Inc. iPhone is a line of smartphones designed and marketed by Apple Inc. Android is a mobile operating system developed by Google Inc. Linux is an open source operating system. Google Chrome is a web browser developed by Google Inc. Safari is a web browser developed by Apple Inc. Microsoft Edge is a web browser developed by Microsoft Corporation and included in Windows 10.

iseozero1@iseo.com